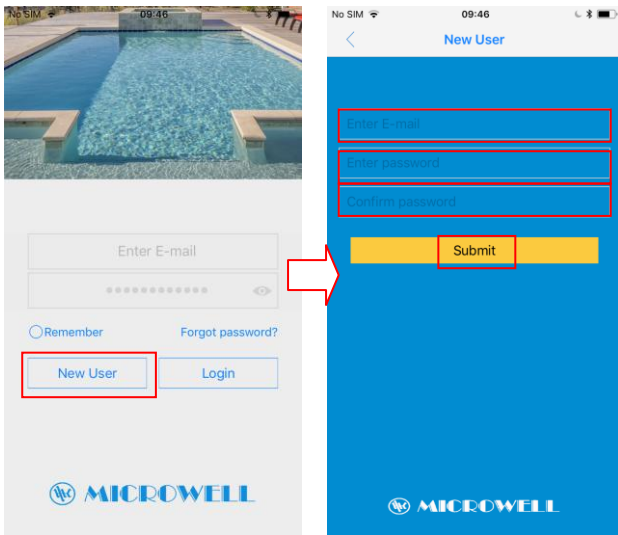
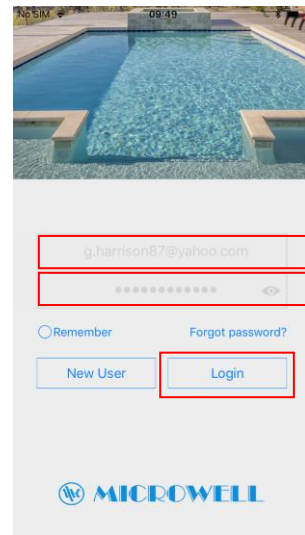


Smart HP - WIFI Registration and pairing guide:

1. To use your WIFI with Microwell swimming pool heat pump you need to register your email address. This is due to security purposes so only you have access to the pump. After registration you will be able to log in to the application and control your heat pump.
2. Click the „New User“ and enter your e-mail address and password to be used and click „Submit“. Email address in format: [xxxx@yyyy.zz](#)
Password in format of [combination letters and numbers](#). This is unique password you now create for an entrance to the Smart HP Microwell application.
3. You will receive an e-mail to email address you inserted in step 2 shortly with an activation link. Click the link and activate your account. Once activation is successful, please proceed to step 4.
4. Now you can enter your e-mail address and password into the fields in the application and click „Login“

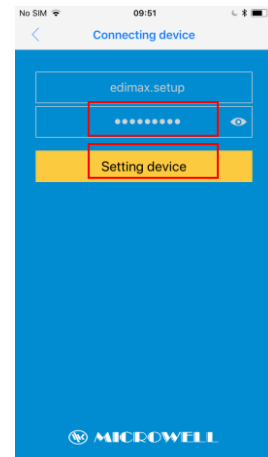
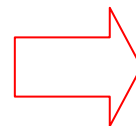
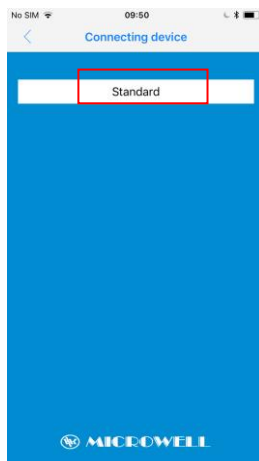
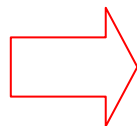
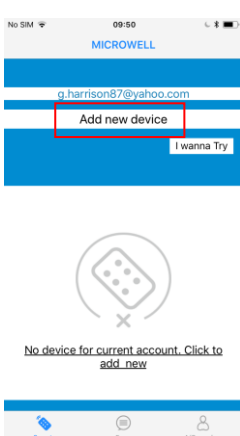


Click „New User“ and enter your information, then activate your account by opening the activation link in the received e-mail

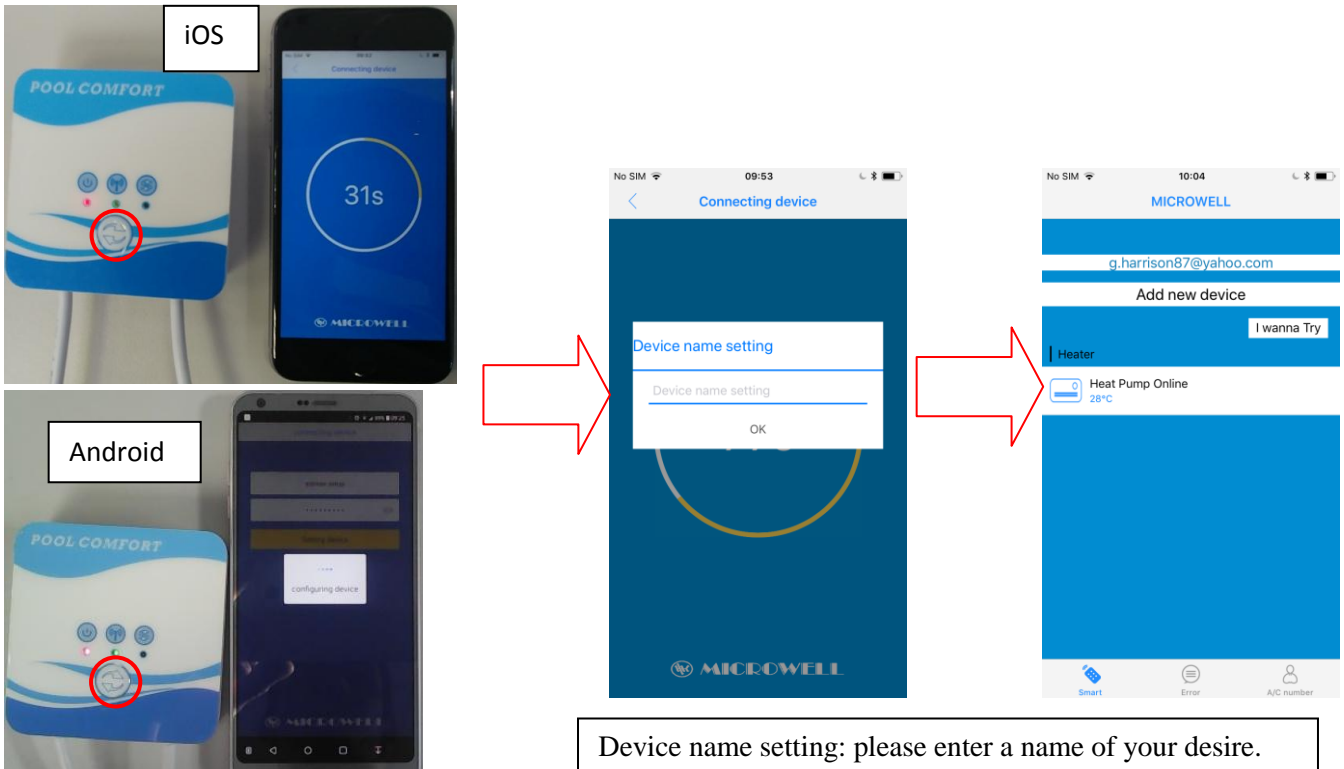


Enter your information into the fields and log in to the application

5. On the next screen you find the list of added devices. There is not any device yet so click the „Add new device“ and proceed to the screen where you select the WIFI network (if you are connected to one then it will be added automatically), enter its password and click „Setting device“. We suggest to perform this operation on a mobile device which is connected to the same WIFI network where the heat pump’s WIFI module will be connected.



- 6. iOS: When the counter is counting push the button on the WIFI box for 3 seconds (the WIFI indicator LED should start flashing fast) to initiate pairing.
Android: When „Configuring device“ screen is displayed push the button on the WIFI box for 3 seconds (the WIFI indicator LED should start flashing fast) to initiate pairing.
- 7. After a few seconds a window pops up where you can enter the name of your heat pump.
- 8. After this step the application finalizes the pairing process and the heat pump becomes available and ready to use



Device name setting: please enter a name of your desire. This will be the name your Microwell heat pump will be called within the Smart HP Microwell application.

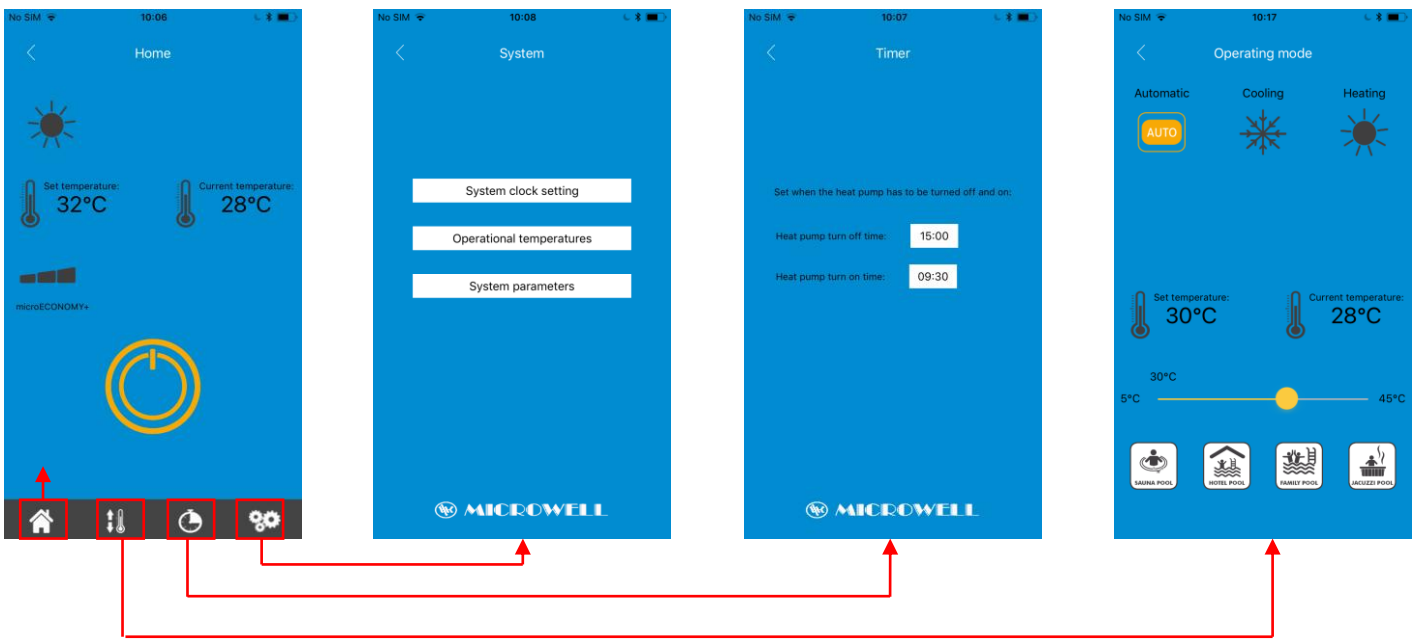
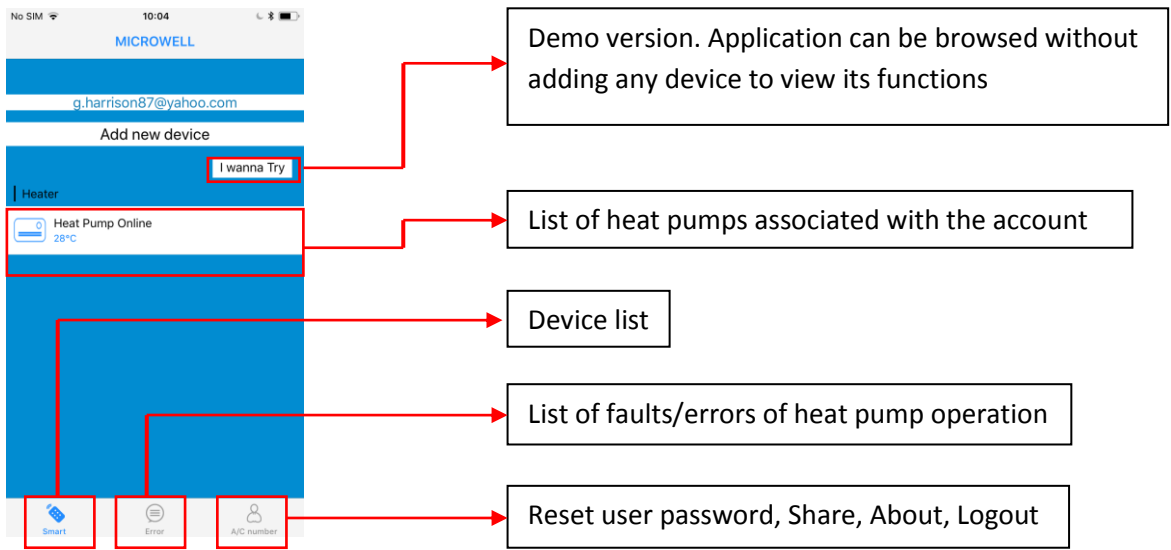
Explanation of indicator LEDs on the WIFI box:

Power indicator LED: Lighting red LED is indicating that the heat pump is powered

WiFi indicator LED: If there is no connection to the router the LED is blinking slowly. After pushing it for 3 secs while pairing it is flashing fast. If there is connection to the router the LED lights continuously

Communication indicator LED: If the wire communication is OK between the boards the LED is flashing accordingly, if the box is unable to communicate the LED goes off after 2 minutes

Brief explanation of device list screen:



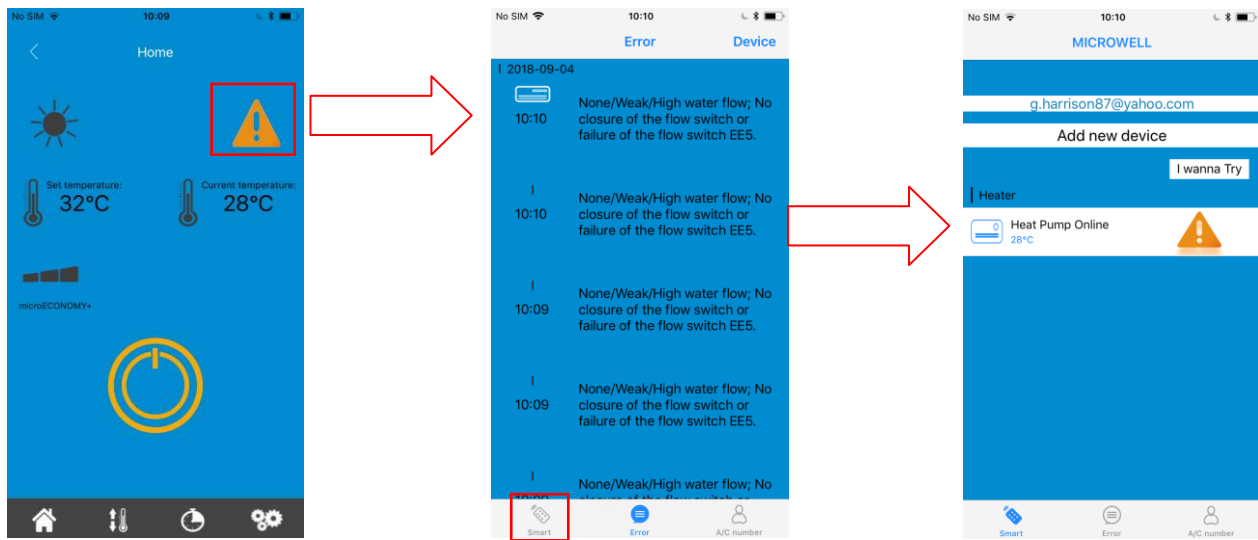
Note: Operational temperatures screen is useful for service and maintenance purposes.

Note: System parameters screen- Change in preset settings may lead to heat pump undesired performance issues, inefficiency, malfunction, failure or damage. Change can be performed by trained technician only!

Note: While browsing the screens and setting the heat pump sometimes the app needs more seconds to sync with the server and reload the screens so user have to wait a little bit. This is normal and depends on the quality of network.

Fault events:

In case of fault event a yellow triangle appears on Home screen. If user clicks on it the screen with the list of all fault events is opened with fault description. If user wants to go back to Home screen he must click „Smart“ field to open the device list screen then choose the heat pump.

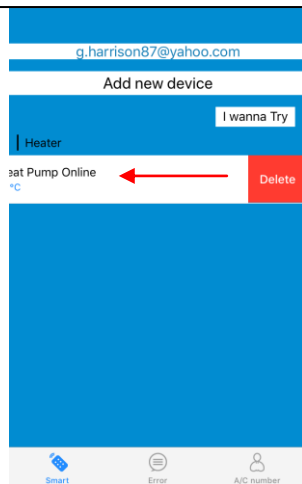


Removing the device from account:

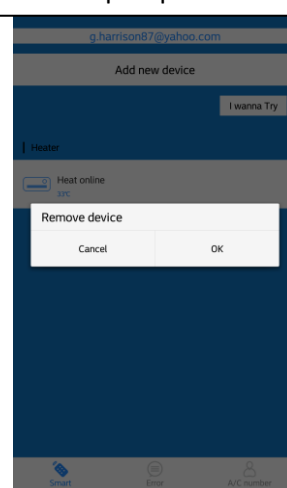
iOS: While on the device list screen swipe the heat pump to the left and „Delete“ appears.

Android: While on the device list screen tap and hold the heat pump and a pop up window appears to delete

iOS: Swipe to the left to delete



Android: Tap and hold the heat pump to delete



Smart HP App Download:

