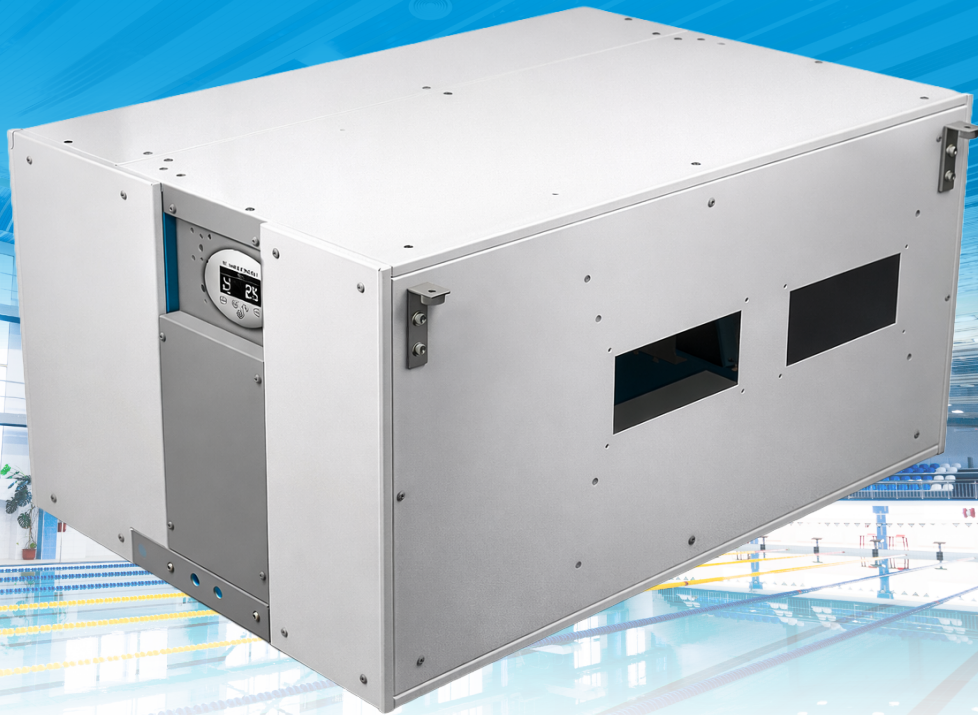


# DRY HORIZON

## CEILING-MOUNTED POOL DEHUMIDIFIER

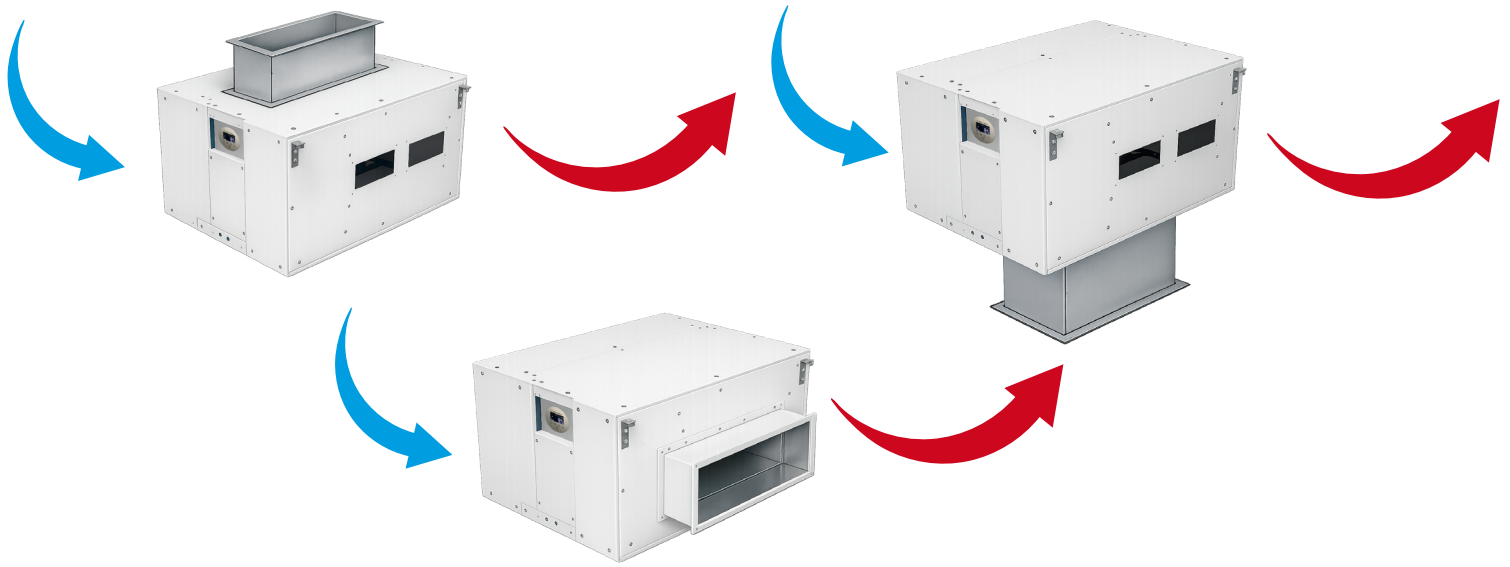


## Pool Dehumidifier for Large-Scale Facilities

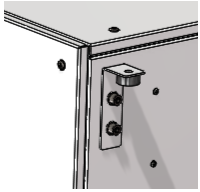
- Swimming pool dehumidifier designed for an installation in plant room
  - Concealed
- Designed for installation in false ceiling, wall or floor
  - Air flow up to **2.150 m<sup>3</sup>/h**
  - External pressure up to **275 Pa**
- Operational point of **1.500m<sup>3</sup>/h** with **200Pa**
- Extraction rate up to **194 kg/day A30RH80**
  - 540mm height
  - G3 filter
  - 1phase / 220-240V

# 3 AIR DIRECTIONS FOR CONNECTION AVAILABLE

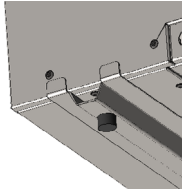
DRY HORIZON is made with complete flexibility in mind. In a standard issued unit you have 3 various air outlet connections. You can connect from the side, from the bottom and to the top. Thus no matter the position or placement of the unit, you still will be able to easily connect any air ducting.



## POSSIBLE INSTALLATION



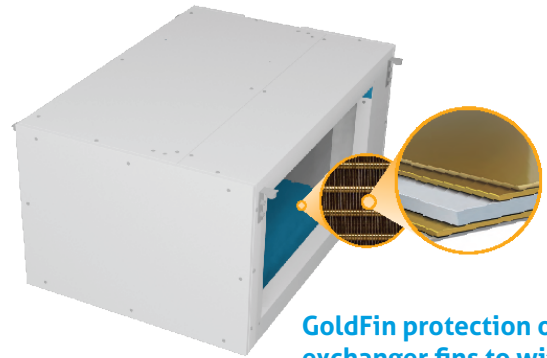
Ceiling-mounted  
(on threaded rods M8)



Floor-mounted  
(floor console)



Wall-mounted console

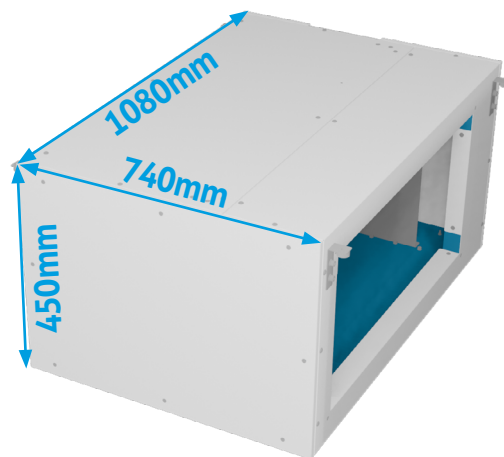


GoldFin protection of air  
exchanger fins to withstand  
chlorine and salt



# PRODUCT SIZE

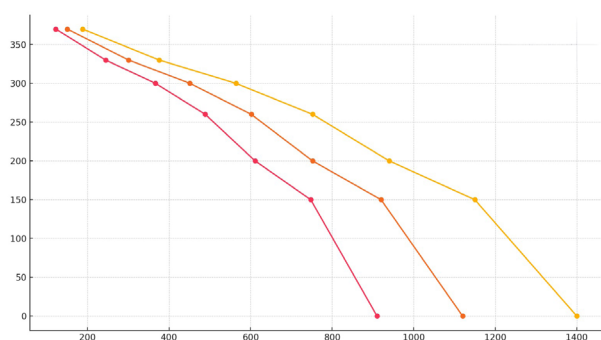
We wanted the DRY HORIZON to be as sleek as possible. For a dehumidifier of this capacity, the 540mm (21.3") of height is really thin. The whole unit will easily fit into most technical and plant rooms or false ceilings in pools.



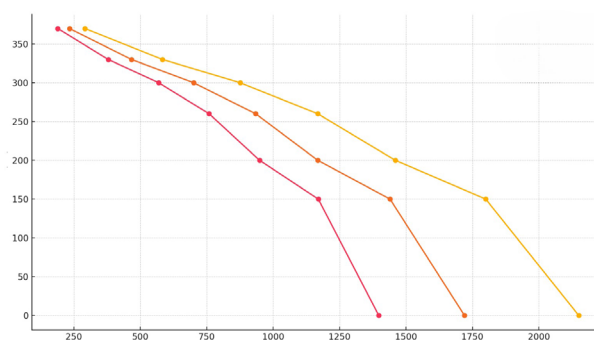
## Technical data

DATA	UNIT	DRY 800 HORIZON	DRY 1200 HORIZON
For swimming pools with max. water surface	m <sup>2</sup>	90	120
Extraction rate at 30°C and 60 % RH	l/24hrs	94	127
Extraction rate at 30°C and 80 % RH	l/24hrs	141	194
Operational temperature - standard	°C	15-35	15-35
Operational temperature - antifreeze stat	°C	15-35	15-35
Operational humidity range	% RH	20-100	20-100
Air flow	m <sup>3</sup> /h	1400	2150
External pressure†	Pa	275	275
Noise level (in 1m distance)	dB (A)	58	64
Heat output	W	5100	5300
Energy consumption	W	2000	2300
Voltage	V/ph/Hz	220-240/1/50	220-240/1/50
Operating / Starting current	A	8.7/50	10/50
Protection	A	16	20
Conductor	mm <sup>2</sup>	CYSY 3C x 2.5	CYSY 3C x 2.5
Condensed water pipe	mm	d 16	d 16
Dimensions netto (width x height x depth)	mm	1048 x 540 x 740	1048 x 540 x 740
Dimensions brutto (width x height x depth)	mm	1200 x 600 x 800	1200 x 600 x 800
Weight netto / brutto	kg	102/135	103/136
Amount of refrigerant - R 410 A	kg	1.7 (3.5t CO2 ekv.)	1.9 (3.97t CO2 ekv.)
Max. pressures in the system HP/LP	bar	40/12	40/12

HORIZON DRY 800



HORIZON DRY 1200



The manufacturer reserves the right to alter the technical data without prior notice.

Remarks: \* The data above is only for reference. For specific data, please refer to the nameplate on the unit.

