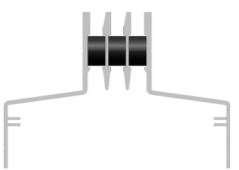


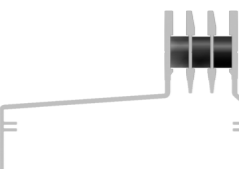
FLOOR GRILLS

Types

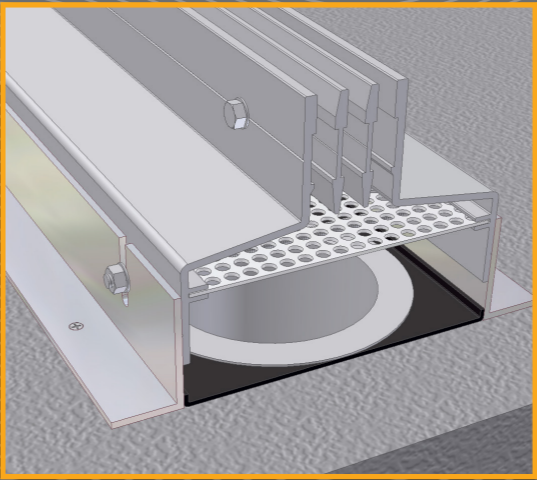
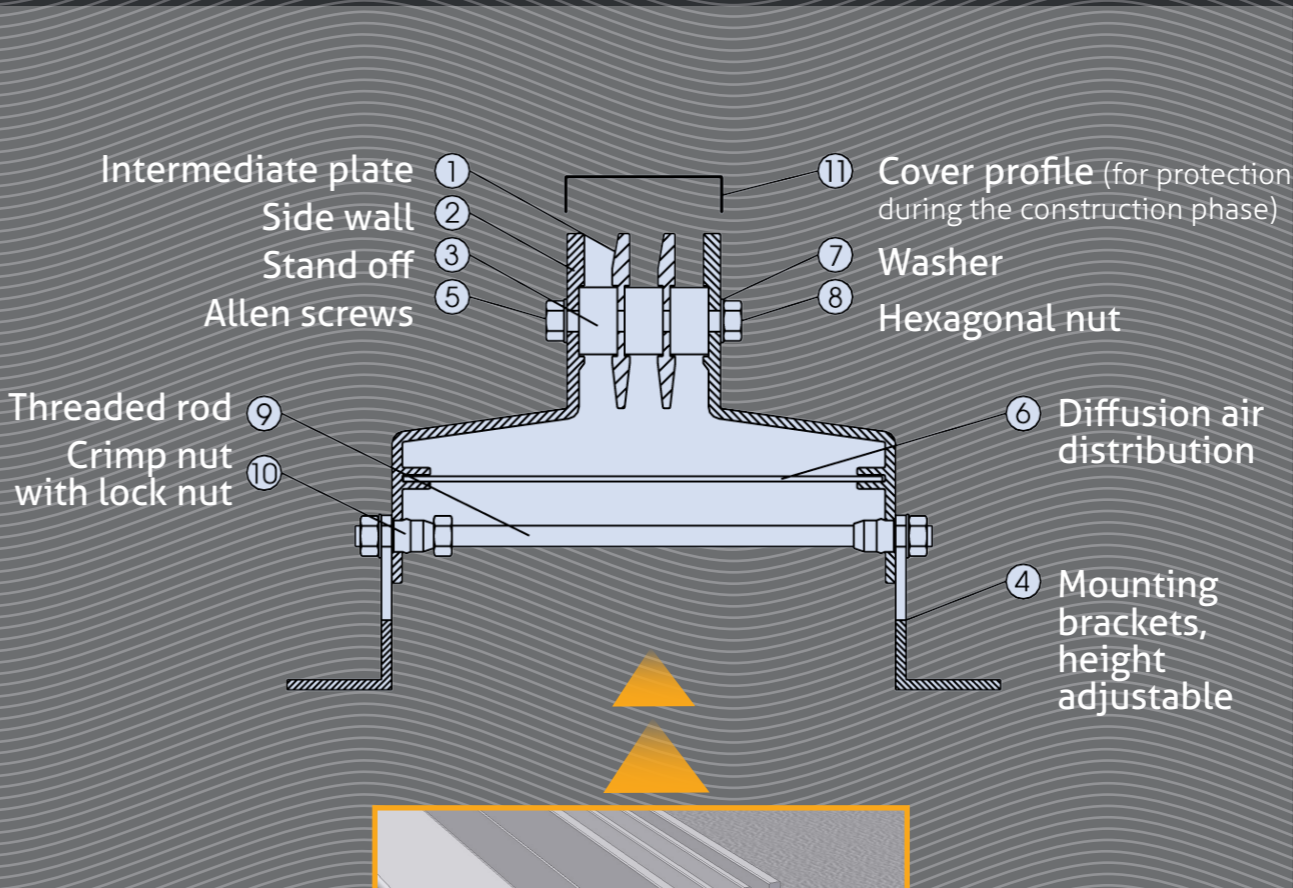
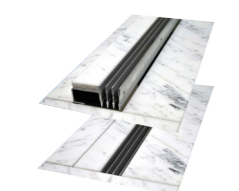
Symmetrical ASS



Asymmetrical ASU



Premium ASR - assymetrical removable



Comfortable room climate

Balanced air flow
no fogging of the windows

Corrosion resistant
Aluminum extrusions profile

Floor grills for swimming pools the ASS, ASU & ASR types are additional accessories to be optional supplied with swimming pool dehumidifiers range DRY DUCT.

Thanks to very low pressure drop (10 Pa per 1 metre in average) they are ideal for ensuring proper air flow and circulation in pool hall thus keeping the requested humidity and air temperature under control.

- KEY POINTS:
- New developed form with improved air flow and dimensional stability for the use especially in swimming pools
 - Manufactured from aluminium AIMg, resistant to corrosion
 - Height - adjusting fixing cells
 - Constructional lengths from 40 to 300 cm
 - Wiping the discs without significant increase of energy losses
 - Covering profiles providing protection during constructional works
 - Architecturally well integrated, no radiators in the swimming hall required
 - Full coverage of the heat demand

Microwell reserves the right to change the technical data without notice.

Model		ASS1 ASU1	ASS2 ASU2	ASS3 ASU3	ASS4 ASU4	ASS5 ASU5
		m²	l/24hrs	l/24hrs	m³/h / Pa	dB (A)
Number of slots	pcs	1	2	3	4	5
Effective slot width	mm	8	16	24	32	40
Recommended air flow	m³/h per running meter	75	150	225	300	375
Maximum air flow	m³/h per running meter	85	170	255	340	425





MICROWELL DRY swimming pool dehumidifiers are an innovative and visually attractive solution for indoor pools. Working on the principle of condensation, they are removing humid air from swimming pool hall, replacing it with dry and warm air. They solve humidity problems and maintain healthy environment by removing condensation and providing free heating through heat recovery.

PLENTY OF OPTIONS

Designing of Microwell dehumidifiers we have always the requirements of **customers in mind**. They offer advanced functionality and the widest selection of accessories, built with best materials, modern equipment and carefully executed processes on every step of product development, everything for customer's satisfaction.

SLOTTED FLOOR INLETS FOR SWIMMING POOLS

Slotted floor inlets are necessary for completion of an ideal air flow inside the swimming pool hall.

They **help to keep the vapor off** the windows and wall by creating an air curtain and **proper airflow**.

VARIETY OF EQUIPMENT

Floor grills are elegant slotted inlet solution for pool hall air supply. Placed next to the windows, they enable air flow in swimming pool hall, creating an air curtain, which prevents vapour condensation. They are made of highly durable and corrosion free aluminium and come in symmetrical, asymmetrical and removable design with a variety of equipment, such as mounting rail, substructure channel, diffusers, corners, end parts, etc.

ASS
—
ASU
—
ASR

Set the comfortable swimming pool hall climate
with floor grills and other accessories.

MICROWELL, spol. s r.o.
SNP 2018/42
927 01 Šal'a, SLOVAKIA

p (+421) 31/770 7082
m (+421) 911/413 990
f (+421) 31/702 0542

e export@microwell.sk
e marketing@microwell.sk
www.microwell.eu

SWIMMING POOL ACCESSORIES



FLOOR GRILLS